

# Specifications

	TB-415	TB-515	TB-615	TB-420	TB-520	TB-620
Axis Travel						
X-axis	1500 mm	1500 mm	1500 mm	2000 mm	2000 mm	2000 mm
Y-axis	250 mm	250 mm	250 mm	250 mm	250 mm	250 mm
Z-axis	200 mm	200 mm	200 mm	200 mm	200 mm	200 mm
A-axis	360°	360°	360°	360°	360°	360°
B-axis	0° – 90°	0° – 90°	0° – 90°	0° – 90°	0° – 90°	0° – 90°
C-axis	±30°	±30°	±30°	±30°	±30°	±30°
Distance Between Center and Table	190 mm	190 mm	190 mm	190 mm	190 mm	190 mm
Distance Between Centers	1500 mm	1500 mm	1500 mm	2000 mm	2000 mm	2000 mm
Motor						
X-axis	2.2 kW	2.2 kW	2.2 kW	2.2 kW	2.2 kW	2.2 kW
Y-axis	1.0 kW	1.0 kW	1.0 kW	1.0 kW	1.0 kW	1.0 kW
Z-axis	1.5 kW	1.5 kW	1.5 kW	1.5 kW	1.5 kW	1.5 kW
A-axis	3 kW	3 kW	3 kW	3 kW	3 kW	3 kW
B-axis	(N/A)	1.5 kW	1.5 kW	(N/A)	1.5 kW	1.5 kW
C-axis	(N/A)	(N/A)	1.0 kW	(N/A)	(N/A)	1.0 kW
Coolant Motor	0.375 kW (1/2 HP)			0.375 kW (1/2 HP)		
Grinding Range						
Diameter	Ø20 – Ø125 mm			Ø20 – Ø125 mm		
Max. Weight	100 kg			100 kg		
Grinding Spindle						
Spindle Power	6.6 kW			6.6 kW		
Rotational Speed	1000~10000 rpm			1000~10000 rpm		
Grinding Wheel Diameter	Max. Ø150 mm			Max. Ø150 mm		
Workhead						
Rotational Speed	100 – 400 rpm			100 – 400 rpm		
Taper	MT5			MT5		
Tailstock						
Travel of Spindle	50 mm			50 mm		
Taper	MT5			MT5		
Controller						
Controller	MITSUBISHI M80W			MITSUBISHI M80W		
Machine Dimensions						
Weight	7000 kg			7500 kg		
Floor Space	5000 x 2250 x 2230 mm			6000 x 2250 x 2230 mm		

※ All specifications are subject to change without notice.

TOP-WORK INDUSTRY CO., LTD.  
TEL : +886-4-2358-1558 | Email : info@topworktw.com  
FAX : +886-4-2358-1268 | No.9, 6th Road, Taichung Industrial District, Taichung 407019, Taiwan

  
www.topworktw.com

# CNC Broach Tool Resharpener Machine



## TB Series

The CNC broach tool resharpener machine can accurately control the grinding dimension compared to the manual type. It benefits to reduce the worn out of broach tools, which extends its lifetime.



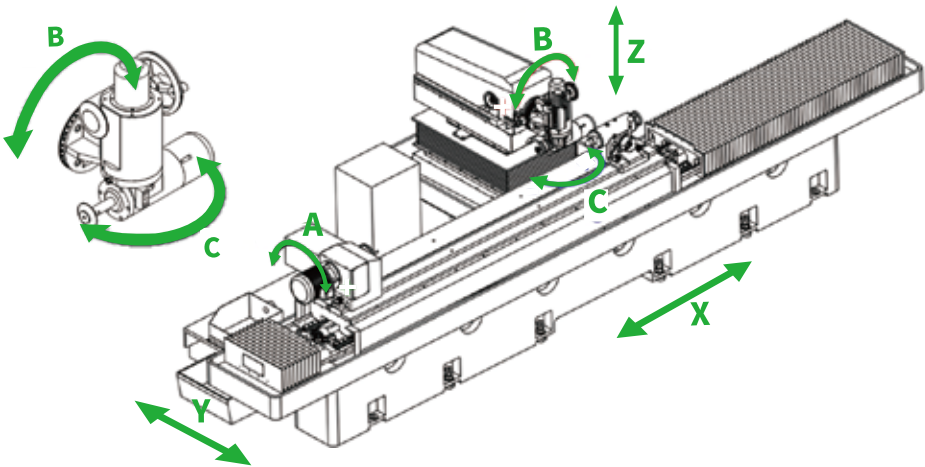
# TB Series Broach Tool Resharpener Machine

Broach tool is an important tool for broaching metals such as inner and outer diameters, keyways, hexagons, gears and gear racks.

After a large amount of broaching process, in order not to affect the surface roughness and broaching accuracy, the cutting edge must be sharpened and ground.

TB series provided 4 axis, 5 axis and 6 axis by servo control. The Max. length of broach too is 2000mm, the diameter range is Ø20 - Ø125.

The machine can be applied for flat broach, round broach and helical broach resharpener.



**4 Axis CNC**  
(X / Y / Z / A)  
Flat Broach Resharpener  
Round Broach Resharpener

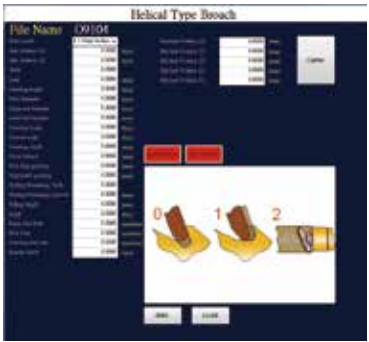
**5 Axis CNC**  
(X / Y / Z / A / B)  
Flat Broach Resharpener  
Round Broach Resharpener

**6 Axis CNC**  
(X / Y / Z / A / B / C)  
Flat Broach Resharpener  
Round Broach Resharpener  
Helical Broach Resharpener

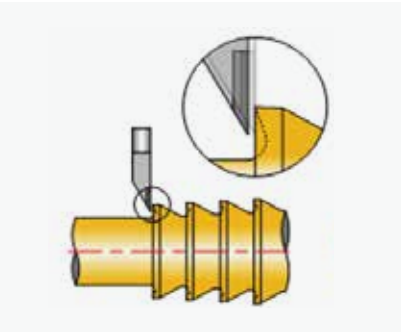


## Features

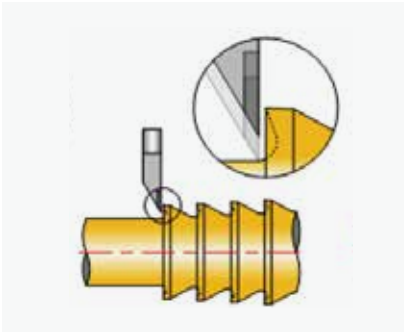
### Interface



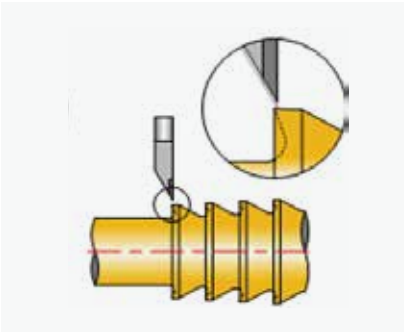
### Probe



Cutting Edge

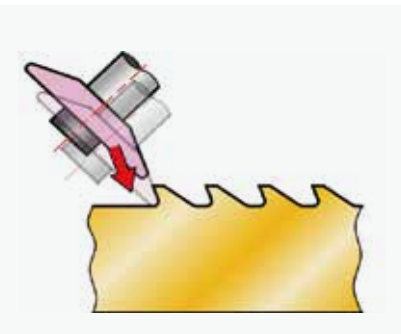


Tooth Bottom

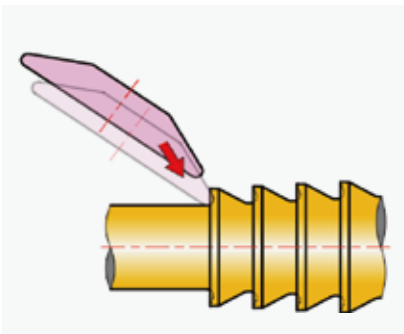


Tooth Height

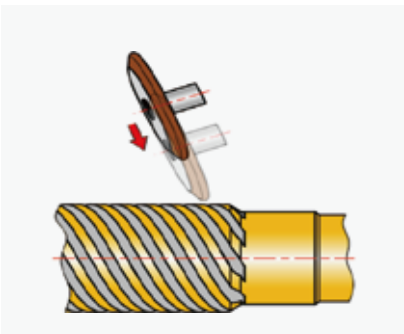
### Application



Flat Broach Resharpener



Round Broach Resharpener



Helical Broach Resharpener